



TECHNICAL SPECIFICATION

- PA SPECIFICATION
- LIGHTING PLAN
- LIGHTING SPECIFICATION
- PROJECTOR SPECIFICATION
- STAGE & MAIN HALL DIMENSIONS
- THEATRE SEATING PLAN
- CABARET SEATING PLAN
- GLASS STUDIO DIMENSIONS
- PARKING & LOAD IN



PA SPECIFICATION - MAIN HALL

INTERNAL PA

The following system will be provided for events where agreed. St George's will provide an Event Assistant to operate the playback and volume levels, although for more professional or nuanced delivery we recommend hiring a Sound Engineer. Please speak with the Events Department in advance for costs and advice.

Mixer:

Soundcraft UI mixer

Microphones:

Radio Mics (Maximum of 4 channels)

4 x Handheld Sennheiser Radio Mics

3 x DPA Headset Mics with Sennheiser SK300 bodypacks

Wired Mics

2 x SM58 Mics

4 x Gooseneck Audio-Technica AT8666 Mics

Speakers:

6 x Audac Axir Column Speakers along columns on Main Hall level

8 x Audac Axir Column Speakers along walls on Gallery level

2 x EV ZX1i Wall Speakers along rear of Gallery level

Playback options:

- ◇ Aux input directly into Mixer from Lighting Cupboard (FOH)
- ◇ HDMI playback from Fixed Screen & Projector: from back of stage wall, from ceiling under Central Gallery next to projector (FOH), and from Lighting Cupboard (FOH)
- ◇ Aux input from back of stage wall
- ◇ Aux input from ceiling under Central Gallery next to projector (FOH)

Please note the Internal PA is intended to amplify speech and is not recommended for singing. If your event is spoken word and you intend to have more than 4 speakers we recommend the Standard Spec PA to be better suited to your needs.



STANDARD SPEC PA PACKAGE 1 (Provided by King Sound Reinforcement)

The following Standard Spec Package with 1X Sound Engineer represents the maximum amplification required at St George's Bristol owing to the responsive acoustic of the Main Hall and based on years of experience. Based on 3pm load-in.

Front of House (FOH):

Mixing Desk Options

- ◇ Midas M32 32 input Digital C/W Midas DL32 AES50 stage box
- ◇ Midas Pro 2 Digital C/W Midas DL251 AES50 stage box **(extra cost)**
- ◇ Digico SD12 Digital console C/W Digico D2 48 input stage box **(extra cost)**

Speakers

- ◇ 2X L-Acoustics ARCS Wide
- ◇ 2X L-Acoustics ARCS Focus
- ◇ 2X L-Acoustics SB18M
- ◇ 2X L-Acoustics ARCS Wifotilt (for horizontal deployment)
- ◇ 2X L- Acoustics LA4 system amplifier
- ◇ 2X Nova EX600 line source, balcony fills
- ◇ Lab Gruppen IPD 2400 amplifier balcony fills

(Larger FOH options are available but generally discouraged at St Georges.)

Please note these speakers are located in stacks on stage in the far downstage corners and will restrict the view of some audience.

On Stage

Microphones (available as required):

- ◇ Shure - SM57, SM58, Beta 57A Beta 58A, Beta 56, Beta 52, Beta 91A, Beta 87A
- ◇ Sennheiser – E604, E904, E606, E609, E614, E935, E945, MD441
- ◇ AKG – 451B, C214, C414 **(extra cost)**
- ◇ Beyer - M88, M201
- ◇ Audio Technica – ATM25, AT 4041, AT 2021m
- ◇ Line Audio CM3, EV RE 20
- ◇ Sennheiser G4 EW300 hand-held/ head worn radio mics, 835, 935 Or 865 capsule **(extra cost)**
- ◇ DPA 4099 Core **(extra cost)**
- ◇ DPA 2011C **(extra cost)**
- ◇ DPA 4061 **(extra cost)**
- ◇ DPA 6066 Core **(extra cost)**
- ◇ DPA 4188 Core **(extra cost)**
- ◇ DPA De Facto **(extra cost)**

Dis:

Active DIs (BSS/KT) available

Monitoring:

- ◇ 6 X Turbosound TFM112M monitors (other options are available extra cost)



- ◇ Lab Gruppen D-40 Lake amplification (6 discrete mixes on stage)
- ◇ Sennheiser 2000 series IEM (extra cost)

On Stage Monitor Mix £POA

- ◇ Midas M32 Console (or other console to suit riders)
- ◇ Passive stage splits
- ◇ Monitor engineer
- ◇ Extra Wedge Monitors/Amps as required up to 12 total



STANDARD SPEC PA PACKAGE 2 (Provided by Tom Bryan PA)

Front of House (FOH):

Mixing Desk:

- ◇ Midas M32r + DL16 Stagebox - 16 mic preamps on stage. 6 individual monitor mixers. If more inputs needed - 16 extra inputs local to the desk in addition to the Stagebox for 32 inputs total.
- ◇ System integrates into the hall's installed PA to cover the galleries and to enable roving wireless mics for audience Q+A if required.

Speakers:

- ◇ Yamaha DZR12 (2Kw per side).
- ◇ Yamaha DXS12 mk2 Subwoofer (1Kw).

On Stage

Microphones (available as required):

Dynamic:

- ◇ Shure – SM58 x3, SM57 x3, Beta 57a
- ◇ Audix – i5 x3, D6
- ◇ Sennheiser 421

Condenser:

- ◇ DPA 4061
- ◇ AKG – C414XLS matched pair, 451, C1000 x2
- ◇ Sontronics STC1 matched pair
- ◇ SE – 1000A x2, SE1 Ribbon

Stands:

- ◇ Boom stands x 16
- ◇ Short boom stands x 5
- ◇ Giant K+M 30ft boom stand to fly mics on recording sessions

DI's:

9 direct inputs available, including:

- ◇ LR Baggs para-acoustic instrument DI
- ◇ Radial ProD2 stereo DI x2

Monitoring:

- ◇ dB Flexys FM12 wedge x2
- ◇ QSC CP12 x 2
- ◇ Additional monitoring available on request



PA SPECIFICATION – GLASS STUDIO

INTERNAL PA

10 X Martin Audio CDD6W wall speakers

1 X Handheld Sennheiser Radio mic

If your requirements are above the internal PA specifications for the Glass Studio, please contact our Events Department for costs and advice.

POWER SPECIFICATION

Cabling is not provided for the power sockets, hirers will need to provide their own cabling. Please send a PAT certificate to the Events Department for any portable items brought into the building.

Room	Spec	Notes
Main Hall	1 X 63amp 3 phase 400v socket 8 X 13amp sockets	Under stage hatch access for 1 X 63amp and 2 X 13amp
Glass Studio	2 X 32amp sockets 12 X 13amp sockets	Under floor boxes within the room
Apollo Room	1 X 32amp socket 8 X 13amp sockets	
Garden Room	1 X 32amp socket 4 X 13amp sockets	



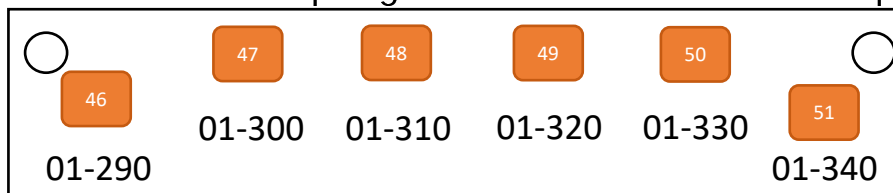
LIGHTING SPECIFICATION – MAIN HALL

The standard specification is shown below. St George's Duty Event Manager will set up 1 x static show LX state for you, and will operate switching between this and the House Lights. All lanterns are in fixed positions. St George's does not have a lighting desk, which means changing lights after the scenes (usually during Sound Check) is not possible. For a more creative and flexible lighting design, we recommend hiring a Lighting Desk and Engineer. Please contact the Events Department for further details.

Control - Chamsys MagicQ software on laptop

LIGHTING PLAN – MAIN HALL

ON STAGE: on Reredos & 2 upstage columns unless otherwise requested

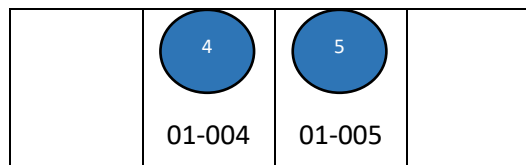
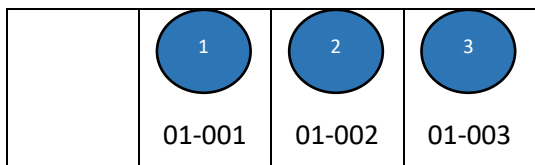
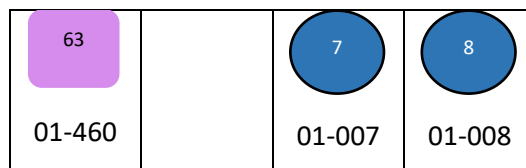
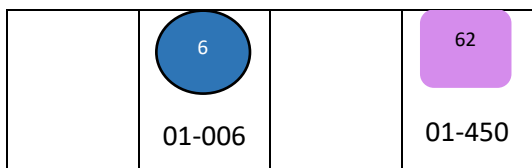


OVER THE STAGE:

39 01-220	40 01-230	41 01-240	42 01-250	43 01-260	44 01-270
33 01-160	34 01-170	35 01-180	36 01-190	37 01-200	38 01-210
27 01-100	28 01-110	29 01-120	30 01-130	31 01-140	32 01-150
21 01-040	22 01-050	23 01-060	24 01-070	25 01-080	26 01-090



FRONT OF HOUSE: Hatches



KEY:

	ELAR 108 Par RGBW LED		Chauvet Professional Ovation LED F-915FC Fresnel
	Elumen8 ELUM 114 RGBWAUV Hex Par Can		ETC source 4 Zoom 15/30 Profile

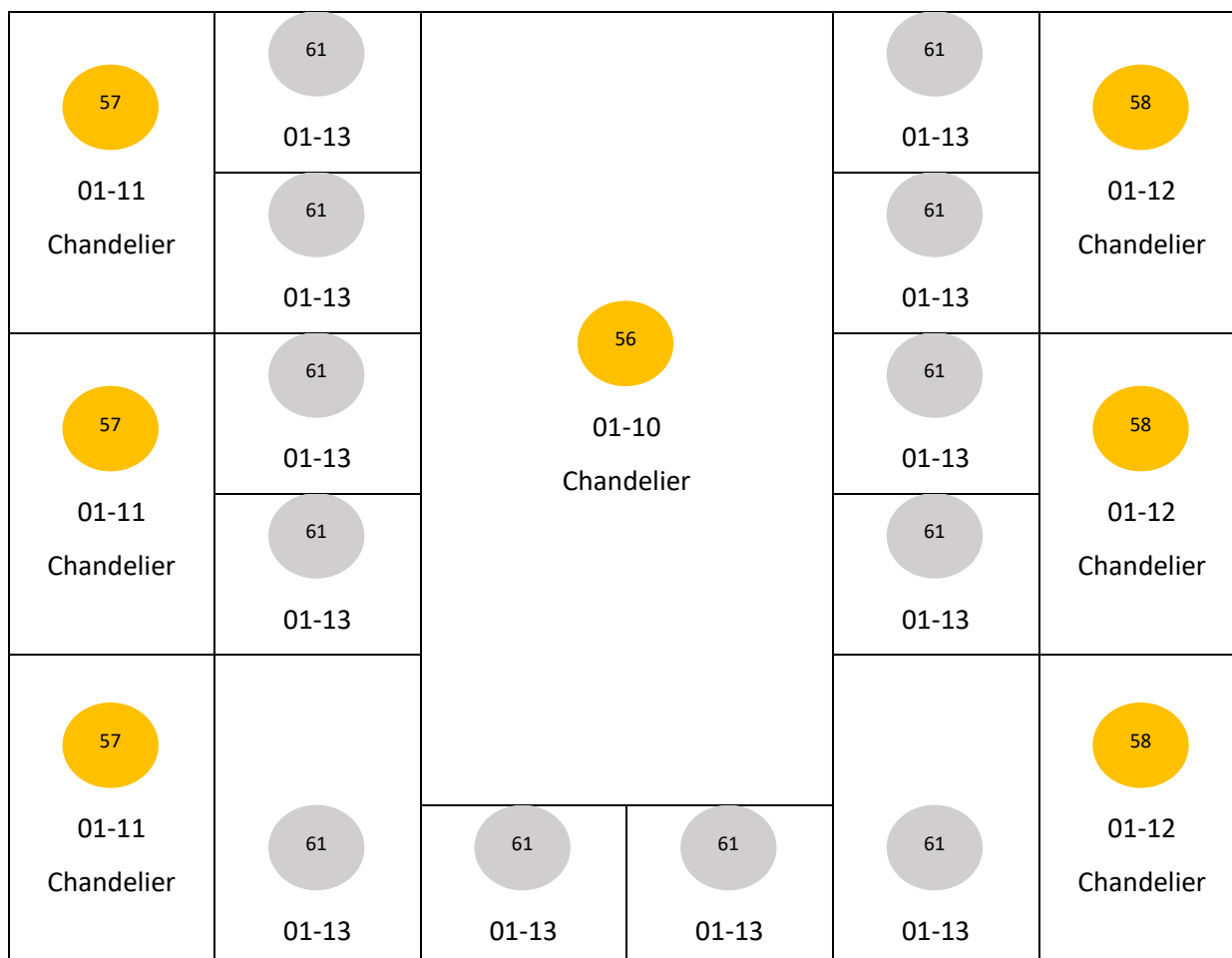
HOUSE LIGHTS

Gallery L

Stalls L

Stalls R

Gallery R





PROJECTOR SPECIFICATION- MAIN HALL

FIXED SCREEN & PROJECTOR

Screen Specifications:

Screen Model	Screen International Major Pro C
Screen Dimensions	700cm x 525cm
Format	4:3
Finish	Matt white surface with no black borders

Projector Specifications:

ITEM	DESCRIPTION
Model	Panasonic PT-MZ14KL SERIES
Type	LCD projector
Contrast	3,000,000:1 (Full On/Full Off) (When [PICTURE MODE] is set to [DYNAMIC] and [DYNAMIC CONTRAST] set to [3].)
Pixels	2,304,000 (1920 x 1200 pixels)
Display Type	Transparent LCD panel (x 3, R/G/B)
Native Resolution	1920 x 1200 pixels, 16:10 aspect ratio (WUXGA)
Light Source	Laser diode, 14,000 Lumens
Light Output	16,500 lm
Input - Standard	HDMI x 2 (One on rear wall of stage (upstage) for HDMI and VGA, one on front of house position)

Please note that if you are using an Apple MacBook, you will need to plug into an ATEM Mini Pro. Please contact the Events Department in advance of the event to ensure your equipment will be suitable to connect to the projector.

STAGE & MAIN HALL DIMENSIONS

Main Hall: 17m x 25m

Stage: 10.2m x 7m

With Stage Extension:

10.2m x 9m

Choir Risers: 0.42 m Height

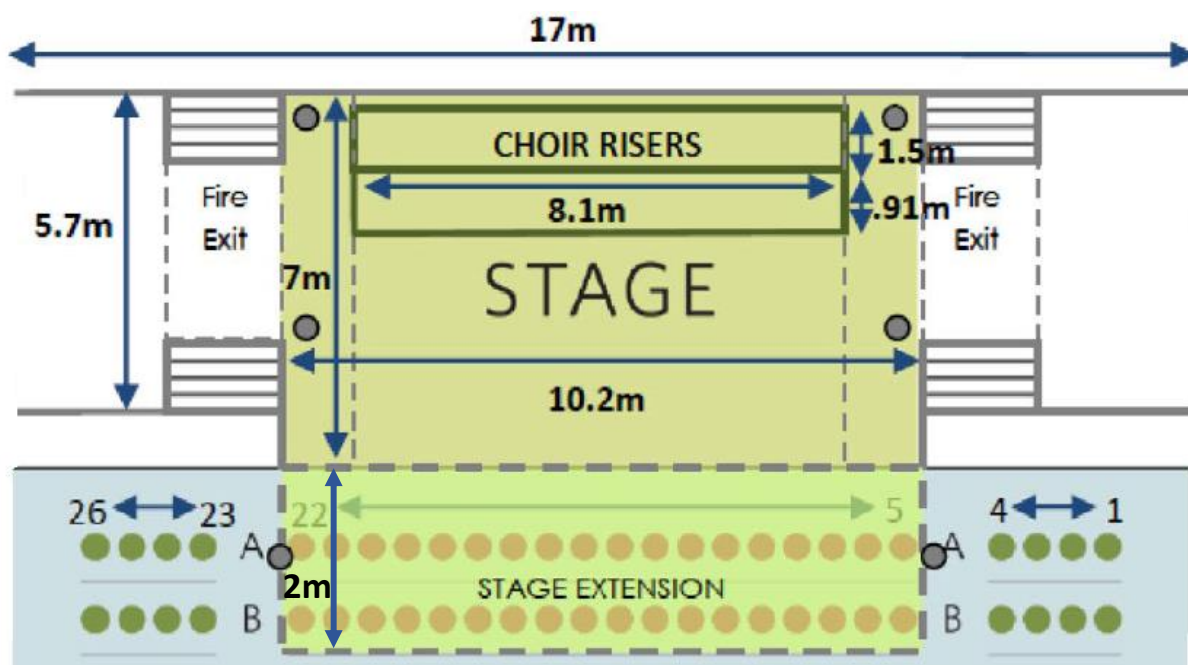
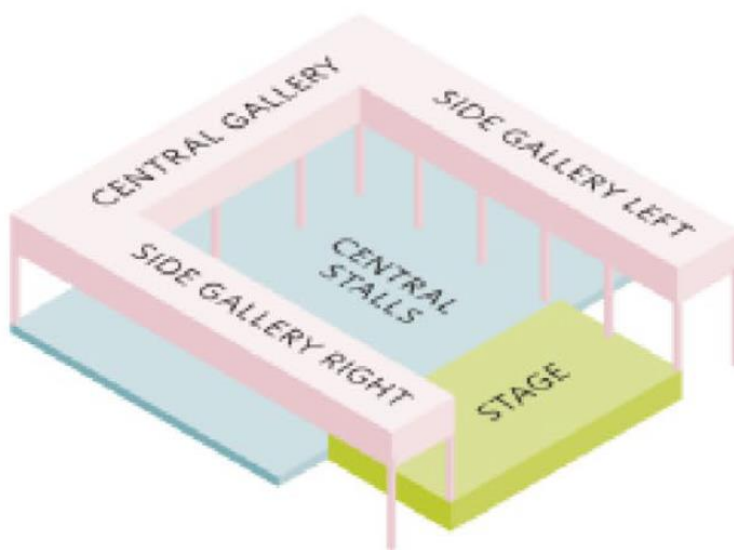
Back Riser: 8.1m x 1.5m

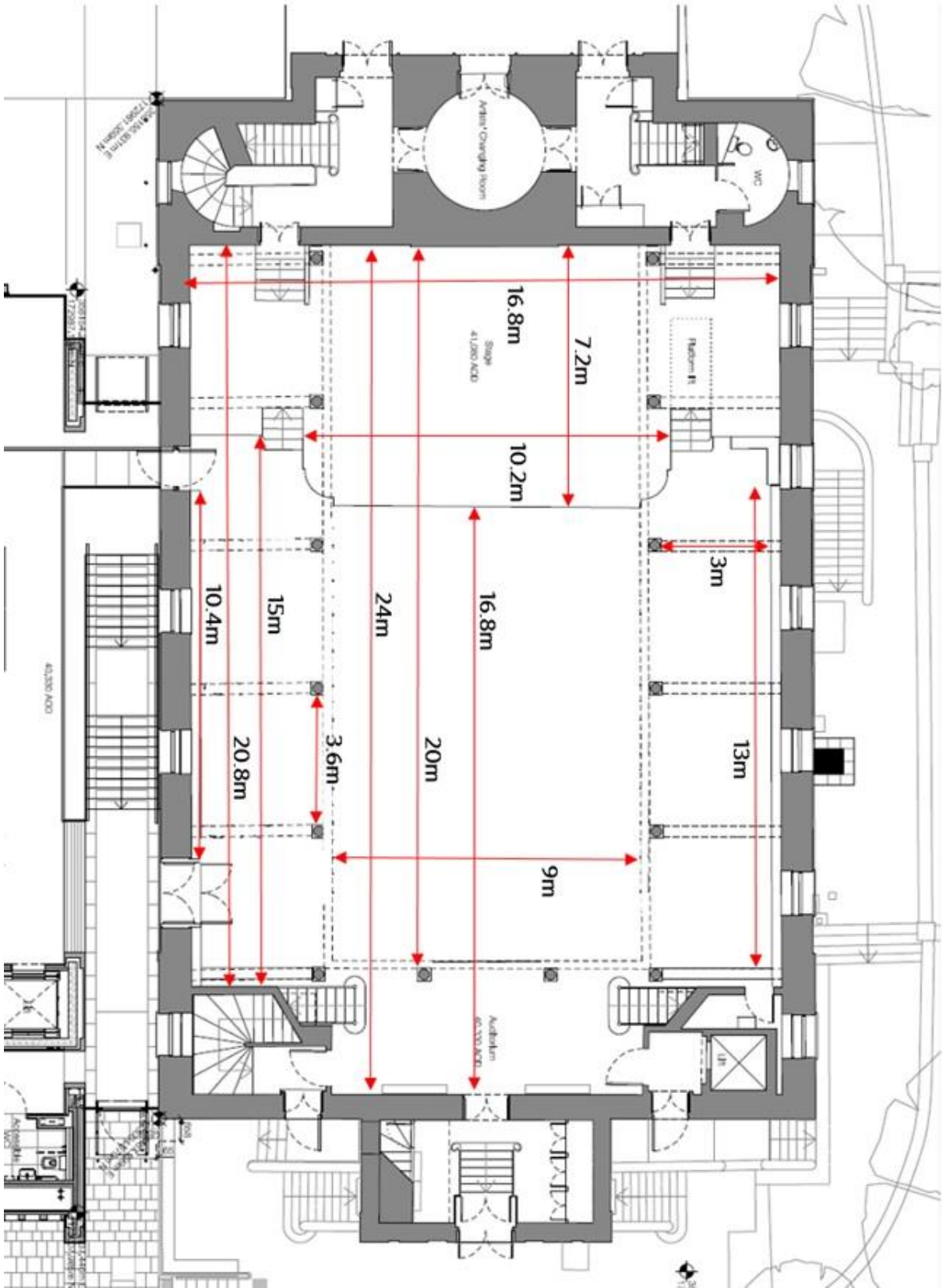
Front Riser: 8.1m x 0.91m

Seating Capacity: 580

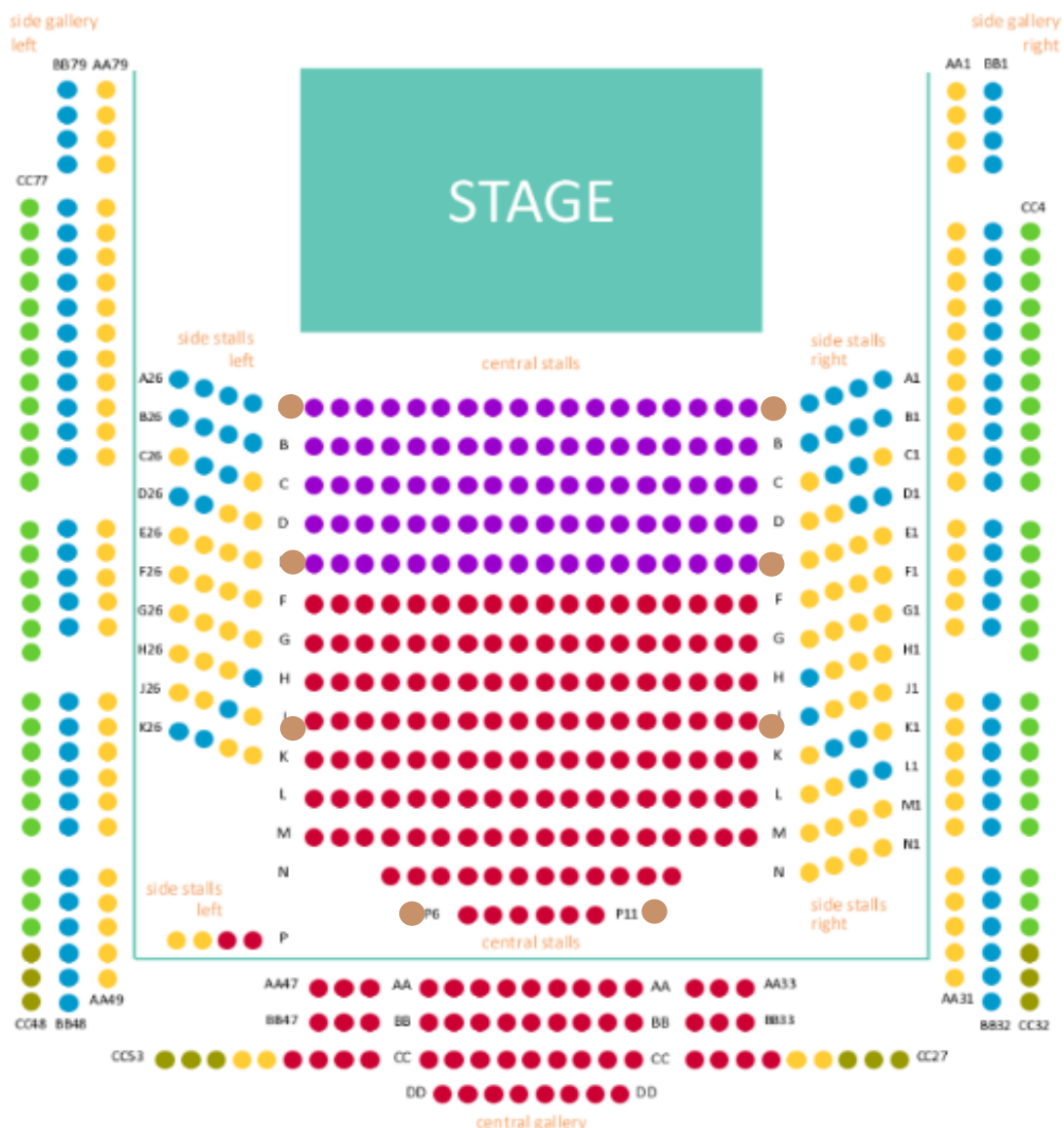
Stalls – 330

Gallery - 250





THEATRE SEATING PLAN - HALL



Area	No Seats
Stalls	330
Central Stalls	234
Side Stalls	96
Gallery	250
Side Galleries	185
Central Gallery	65
Total	580

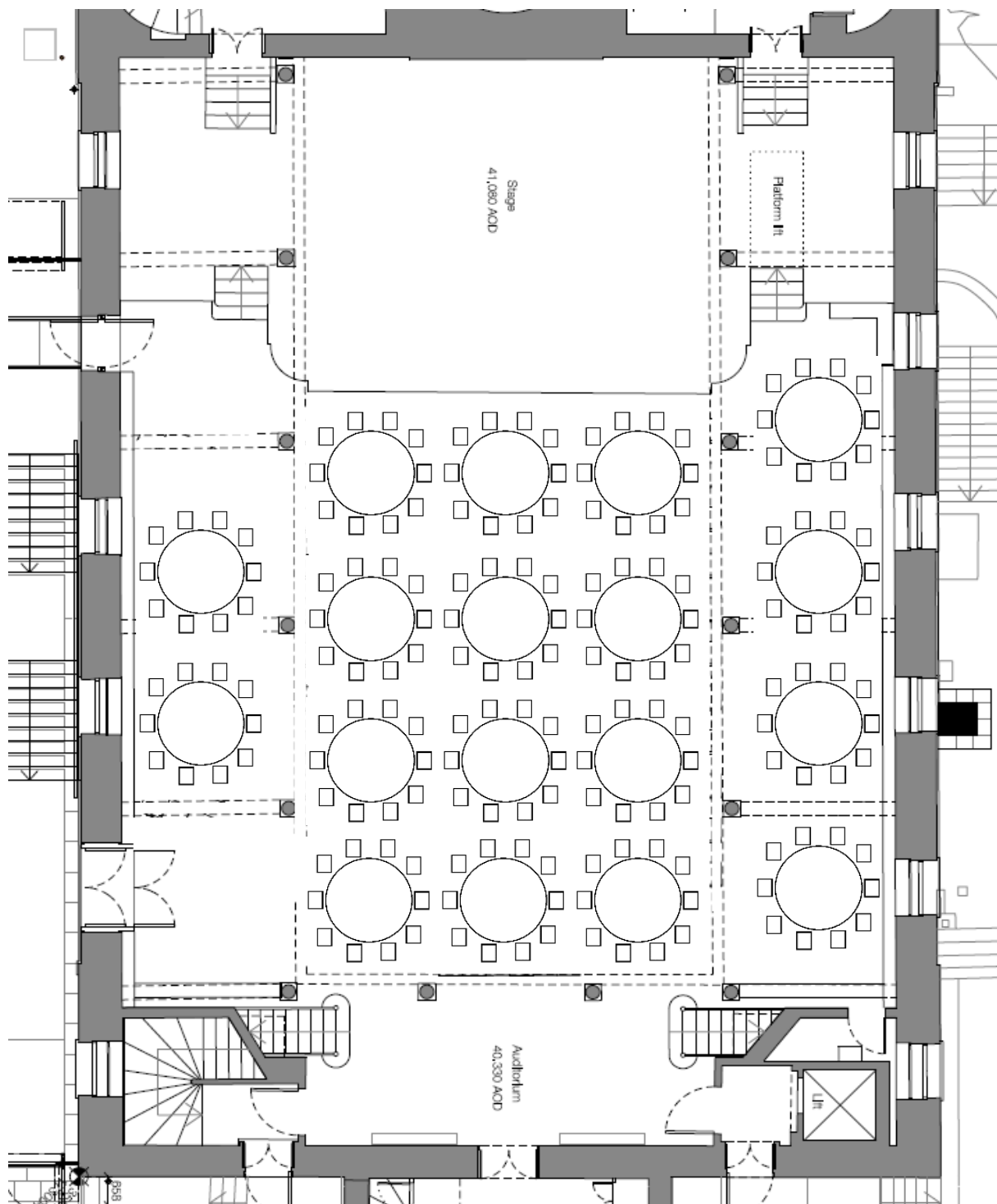


CABARET SEATING PLAN - HALL

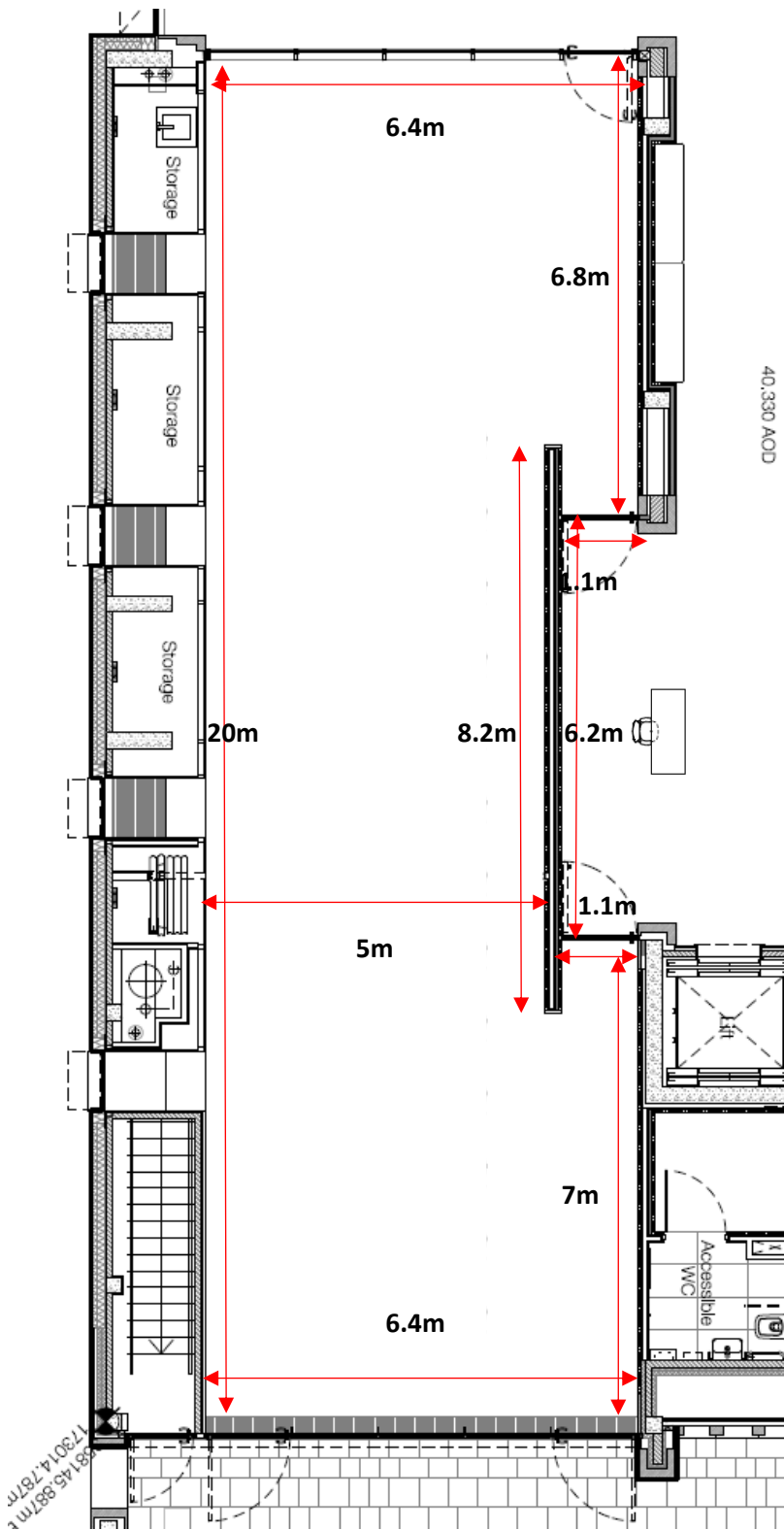
Capacity: 180 seated

Tables: 18 x 6' Round

Chairs: 10 x Main Hall chairs max. per table



GLASS STUDIO DIMENSIONS



PARKING & LOAD IN

LOAD IN ADDRESS:

Charlotte Street,
Bristol
BS1 5RR

Drive up Great George Street, then turn right, and right again, to Charlotte Street to our gated car park.



PARKING:

There are:

- 2 x spaces available before 6pm
- 2 x spaces available after 6pm

Each car parking space is 4x2.5m.

Parking availability is subject to

change and spaces need to be booked in advance with our Events Department.



DISABLED ACCESS:

Please ensure you do not obstruct the two disabled access points in the car park at any time (see pictures below for reference).



We have two spaces available for audience 'Blue Badge' holders for each concert, which can be booked in advance through the box office.

Distances from the car park entrance to building: from the roadside it is 3 metres to the car park gates, then 15 metres to the level access entrance on the left of this photo. The level access walkway to the passenger lift is 22 metres from the car park edge.

There is an accessible toilet backstage behind stage left, accessed via the stage lift. Accessible toilet facilities in the front of house are located on the Café and Main Hall levels, with both locations accessible by lift.

LOADING INTO THE MAIN HALL

There are 2 x set of steps into the Main Hall.

- 10 x steps down from car park level to back doors
- 7 x steps from back doors to Hall level
- 5 x steps from Hall level to stage (on both sides of the stage)



There is a bridge connecting the car park to our Internal Passenger Lift which may be used to directly access the Hall level on Floor 1 and the Café Bar level on the Ground Floor.

The weight limit is 1000kg.

The dimensions are:

Door width: 900mm

Door height: 2100mm

Cab internal height: 2200mm

Cab internal width: 1600mm

Cab internal depth: 1400mm



There is a platform lift on stage left for step free access to stage level. Please contact a member of St George's staff on the day to operate this.

The dimensions of this lift platform are:

Length: 3000mm

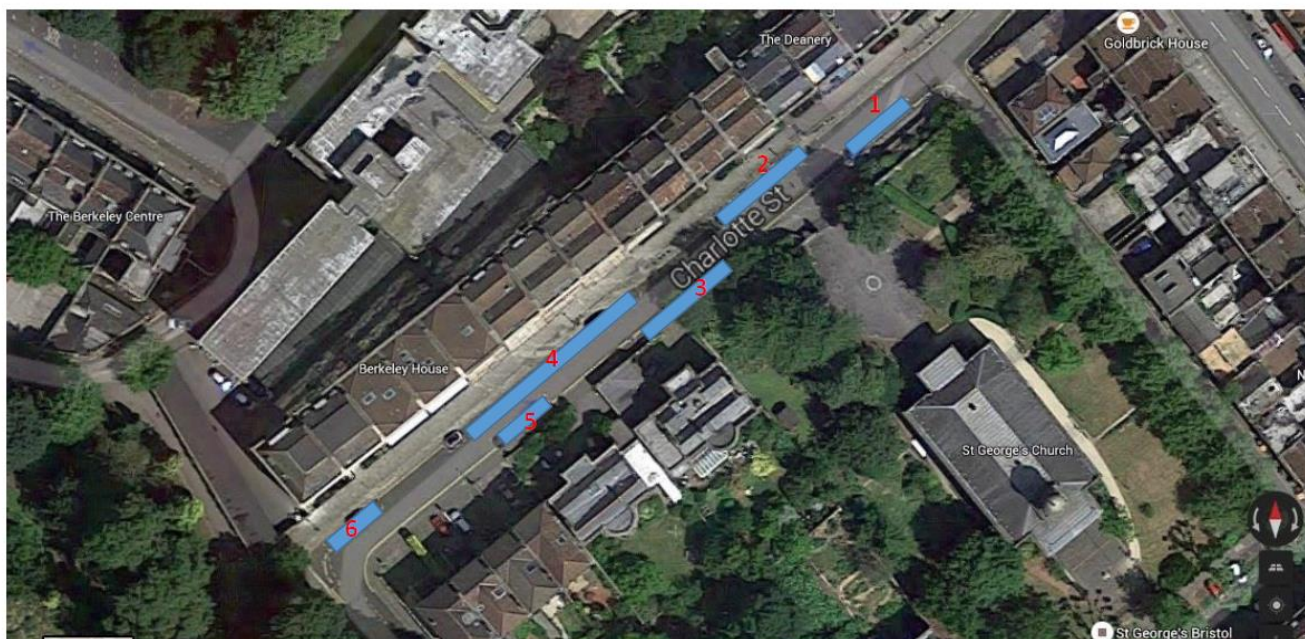
Width: 1200mm

Max height: 2100mm

TOUR BUSES / TRUCKS / COACHES

BAY SUSPENSION

The below shows you the Docks, measurements, and how many bays in each location. If you wish to apply for suspended bay parking on the street please contact the Events Department. These are charged at £40+VAT per bay.



Dock 1:	23.17m	x 2.23m	4 Bays
Dock 2:	17.8m	x 2.27m	4 Bays
Dock 3:	17m	x 2.18m	3 Bays
Dock 4:	40.82m	x 2.33m	8 Bays
Dock 5:	11.74m	x 2.33m	2 Bays
Dock 6:	11.33m	x 2.30m	2 Bays

TOUR BUSES & OTHER LARGE VEHICLES

Please note that we have had issues with Tour Bus drivers refusing to drive up to Charlotte Street. It is a tight corner on a steep hill, and they are usually anxious about the axle getting caught on the gradient of the road. This link to Google Street View is useful for the driver to work out the one-way system up Great George Street and around the block to Charlotte Street to figure out if they're comfortable with the bus getting up the hill – <https://www.google.com/maps/@51.4541973,-2.6029876,3a,75y,228.08h,98.23t/data=!3m6!1e1!3m4!1sWQWK8q5afWnNNF3mZSbA3w!2e0!7i16384!8i8192>



Please also pass onto the driver that on departure from Charlotte Street, they cannot turn left onto Park Street as the gradient is too steep and the axle will get caught. They can however, turn right to go down Park Street towards the City Centre and the M32.

TOUR BUS POWER

There is also external 16amp power available for Tour Buses to hire for the day at £90+VAT. The nearest Dock to this power source is Dock 3. Please ensure you bring your own cables, cable matting to cover the public pathway, and correct adapter for the power source. A 20-metre cable is recommended if parking in the car park. If parking in bay suspension on Charlotte Street, please contact the Events Department to discuss cable lengths.